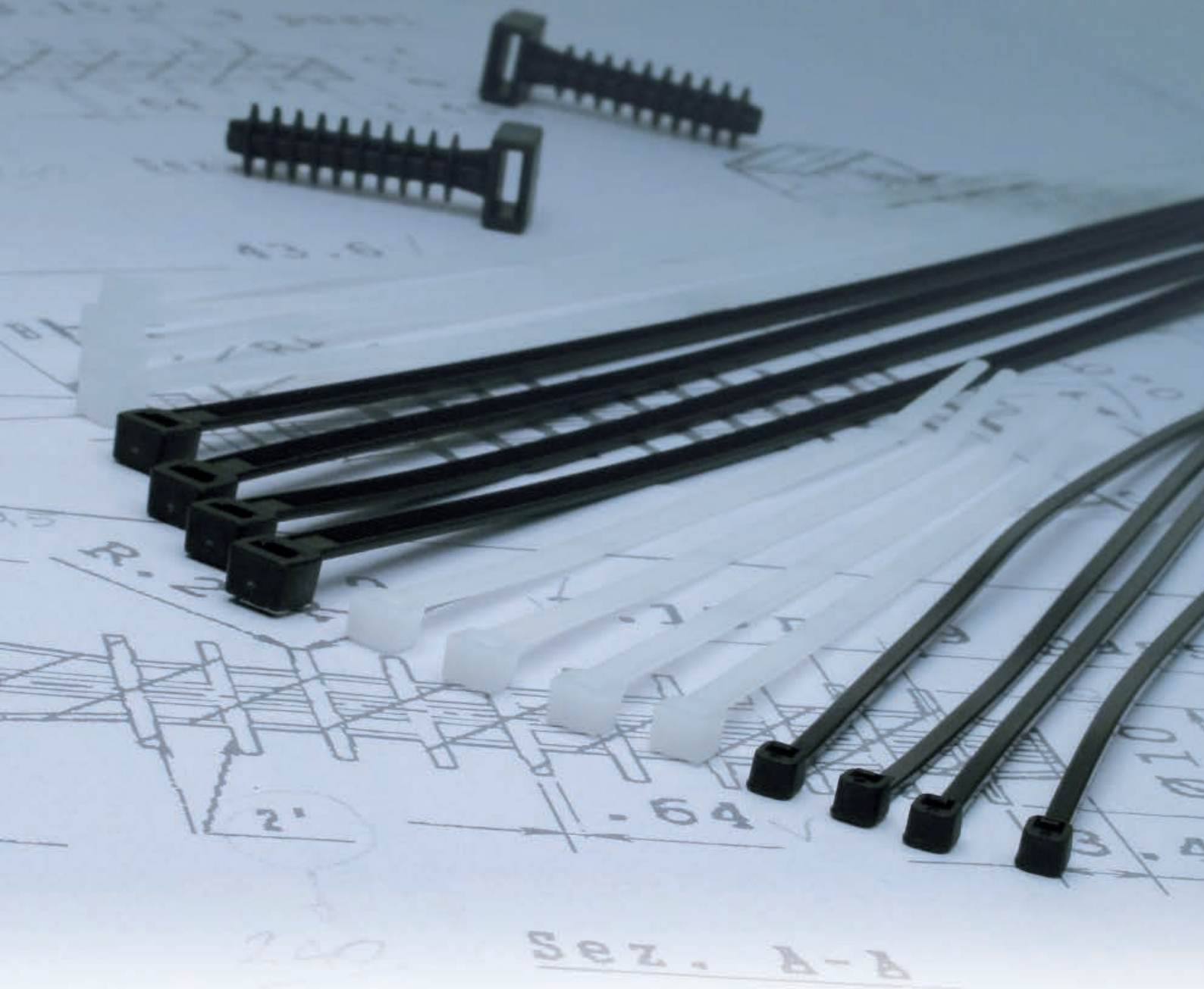


Plumbing and Electrical fixing systems
with accessories



**PLUMBING AND ELECTRICAL
FIXING SYSTEMS
WITH ACCESSORIES**



stone concrete solid brick semisolid brick

SANIFIS SF2 - with stainless steel screw*
Anchor for fixing of sanitary wear

INOX (A2)



ART.	Ø x L _t mm	DESCR.	BAR mm	BOX pcs	CARTON pcs
HSF02	8x40	SF2	M6x80	4	50

SANIFIS SF3
Anchor for fixing of sanitary wear



ART.	Ø x L _t mm	DESCR.	STEEL ANCH. mm	BOX pcs	CARTON pcs
HSF310	10x50	SF3/100	8x100	2	25
HSF320	12x60	SF3/120	10x120	2	25
HSF340	14x70	SF3/140	10x140	2	25

SANIFIS SF4
Anchor for fixing of sanitary wear, for the installation of water heaters and boilers



ART.	Ø x L _t mm	DESCR.	HOOK mm	BOX pcs	CARTON pcs
HSF410	10x50	SF4/10	8x65	2	50
HSF412	12x60	SF4/12	10x75	2	50
HSF414	14x70	SF4/14	10x95	2	25

BRIC BCM NYLON ANCHOR
Anchor for fixing of sanitary wear, water heaters and boilers



ART.	Ø x L _t mm	DESCR.	BAR mm	BOX pcs	CARTON pcs
HBT01	14x72	BCM10/120	10x130	2	25

BRIC BCM NYLON ANCHOR
Anchor for fixing of sanitary wear, water heaters and boilers



ART.	Ø x L _t mm	DESCR.	HOOK mm	BOX pcs	CARTON pcs
HBG01	14x72	BCM10/414	10x95	2	50

FAST ACCIAIO - STELL COLLAR
for fastening pipes with diameters from 3/8" to 4", it comes complete with nylon plug



ART.	Ø x L _t mm	DESCR.	BOX pcs	CARTON pcs
TFAT01	.	FA 3.8 T	2	50
TFAT02	.	FA 1/2 T	2	50
TFAT03	.	FA 3/4 T	2	50
TFAT04	.	FA 1 T	2	50
TFAT05	.	FA 1.1/4 T	2	50
TFAT06	.	FA 1.1/2 T	2	50
TFAT07	.	FA 2 T	2	25
TFAT08	.	FA 2.1/2 T	2	25
TFAT09	.	FA 3 T	2	25
TFAT10	.	FA 4 T	2	25

PLUMBING AND ELECTRICAL FIXING SYSTEMS WITH ACCESSORIES

LOCKING AND CABLING NYLON TIES (POLYAMIDE 6.6)*

materials classified UL94V2
according to CE European regulations
color: black



LOCKING AND CABLING NYLON TIES (POLYAMIDE 6.6)*

materials classified UL94V2
according to CE European regulations
color: white



BIDIRECTIONAL SELF-ADHESIVE TIE

with special natural adhesive
color: white



NYLON 6 SADDLE TYPE TIE MOULD

color: black or white



TOOLS FOR CABLE TIES



ART.	LENGTH x WIDTH	DESCR.	BOX	CARTON
	mm		pcs	pcs
HFN1025	100x2,5	-	100	5000
HFN1425	140x2,5	-	100	5000
HFN2025	200x2,5	-	100	5000
HFN1436	140x3,6	-	100	5000
HFN2036	200x3,6	-	100	5000
HFN2936	290x3,6	-	100	5000
HFN3636	360x4,8	-	100	5000
HFN2048	200x4,8	-	100	5000
HFN2548	250x4,8	-	100	5000
HFN2948	290x4,8	-	100	5000
HFN3648	360x4,8	-	100	4000
HFN5348	530x4,8	-	100	4000
HFN2576	250x7,6	-	100	2000
HFN3676	360x7,6	-	100	2000
HFN5476	540x7,6	-	100	1000
HFN5390	530x9,0	-	100	2000

* selling on complete package

ART.	LENGTH x WIDTH	DESCR.	BOX	CARTON
	mm		pcs	pcs
HFB1025	100x2,5	-	100	5000
HFB1425	140x2,5	-	100	5000
HFB2025	200x2,5	-	100	5000
HFB1436	140x3,6	-	100	5000
HFB2036	200x3,6	-	100	5000
HFB2936	290x3,6	-	100	5000
HFB3636	360x3,6	-	100	5000
HFB2048	200x4,8	-	100	5000
HFB2548	250x4,8	-	100	5000
HFB2948	290x4,8	-	100	5000
HFB3648	360x4,8	-	100	4000
HFB5348	530x4,8	-	100	4000
HFB2576	250x7,6	-	100	2000
HFB3676	360x7,6	-	100	2000
HFB5390	530x9,0	-	100	2000

* selling on complete package

ART.	DIMENSIONS	DESCR.	WIDTH max TIE	BOX	CARTON
	mm		mm	pcs	pcs
HBD01	19x19	-	3,6	100	5000
HBD02	27x27	-	4,8	100	5000

ART.	DIMENSIONS	DESCR.	WIDTH max TIE	BOX	CARTON
	mm		mm	pcs	pcs
HTFN01	10x43	F10-BLACK	9	100	5000
HTFB01	10x43	F10-WHITE	9	100	5000

ART.	DESCR.	WIDTH max TIE	BOX	CARTON
		mm	pcs	pcs
TK40	PF01	9	1	1

PLUMBING AND ELECTRICAL SUPPORT ACCESSORIES

FAST CLIP – NYLON SUPPORTS

for fastening plastic tubes with diameter from 16 to 50 mm, and wires.



ART.	Ø x L _t mm	DESCR.	Ø TUBE mm	BOX pcs	CARTON pcs
HFC01	.	FC16	16	100	1000
HFC02	.	FC20	20	100	1000
HFC03	.	FC25	25	100	1000
HFC04	.	FC32	32	100	1000
HFC05	.	FC40	40	25	250
HFC06	.	FC50	50	25	250

FAST QUADRO – NYLON SUPPORTS

for fastening plastic tubes with diameter from 12 to 43 mm, and wires.



ART.	Ø x L _t mm	DESCR.	Ø TUBE mm	BOX pcs	CARTON pcs
HFQ02	.	FQ20	12-20	100	1000
HFQ03	.	FQ24	16-24	50	500
HFQ04	.	FQ30	18-30	50	500
HFQ05	.	FQ40	27-43	25	250

SUPPORTS FAST FIX

for tubes.. Ø16-63



NEW

ART.	Ø x L _t mm	DESCR.	Ø TUBE mm	BOX pcs	CARTON pcs
HFF01	.	FF32	16-32	100	1000
HFF02	.	FF63	40-63	50	500

STEEL PERFORATED BANDING

right type with single hole



ART.	WIDTH x THICKNESS mm	DESCR.	ROLL mt.	CARTON pcs
850011	12x0,8	BPD12D	10	10
850028	17x0,8	BPD17D	10	10

STEEL PERFORATED BANDING

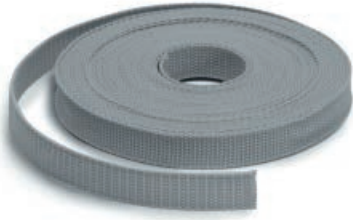
right type with multiple holes



ART.	WIDTH x THICKNESS mm	DESCR.	ROLL mt.	CARTON pcs
850035	17x0,8	BPD17E	10	10
850066	25x0,8	BPD25E	10	10

**PLUMBING AND ELECTRICAL
SUPPORT ACCESSORIES**

TISSUE BANDING



ART.	LARGH. x SPESSORE mm	DESCR.	ROLL mt.	CARTON pcs
85007	15x1,0	BPP12D	10	10
85008	15x1,0	BPP17D	25	10

GEBOPIN

Percussion nail pin for fixing
of the perforated banding



ART.	Ø x L mm	DESCR.	BOX. pcs	CARTON pcs
TCHI14	4,2x14	GP1	200	4000
TCHI18	4,2x18	GP2	200	4000
TCHI22	4,2x22	GP3	200	4000
TCHI27	4,2x27	GP4	200	4000

PGP PERCUSSOR
for nail pin **GEBOPIN**



ART.	DESCR.	BOX. pcs	CARTON pcs
TK50	PGP	1	50