

# AUTOMATIC LCD WELDING HELMETS

AUTOMATIC LCD WELDING HELMET WITH POWERED AIR-PURIFYING RESPIRATOR SYSTEM

## PANTHER FLOW 3 Bluetooth™



**Welding Helmet: IWELD PANTHER FLEX RC (8PNTHRFLXRC)**

- 1/1/1 rated True Color LCD filter cartridge
- True Color technology with excellent optical properties and with near-reality color fidelity
- Lightweight, ergonomic design, impact-resistant material
- Flip-Up structure
- Large clear field of view for grinding and cutting
- Full head protection
- Quick and easy switching between grinding and welding mode.
- With Bluetooth remote control

**P3 FILTER UNIT**

**3-stage adjustable air supply**

- comfortable to wear due to its low weight
- high capacity (6800 mAh) Li-ion battery
- backlit LCD on the control panel
- vibrating combination audible signals
- TH3 P R SL protection level
- ergonomic waistband combined with shoulder strap

**PANTHER FLEX RC™**

**8PNTHRFLW3**



# AUTOMATIC LCD WELDING HELMETS

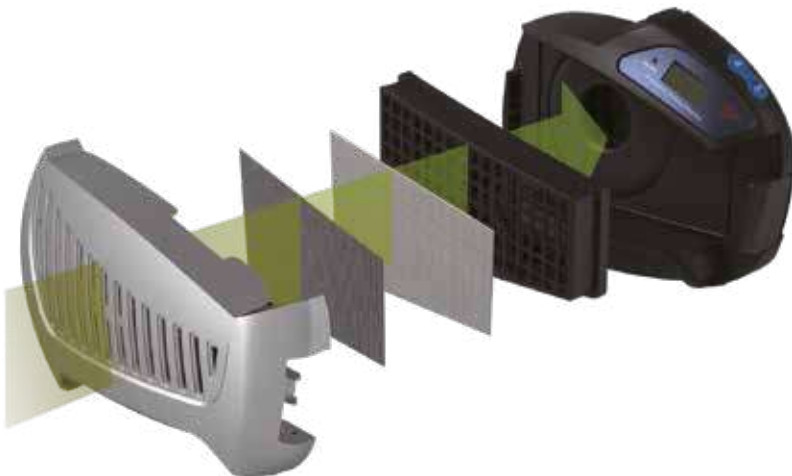
AUTOMATIC LCD WELDING HELMET WITH POWERED AIR-PURIFYING RESPIRATOR SYSTEM

## PANTHER FLOW™

- Adjustable 3 level air-flow control
- Light weight and comfortable
- High capacity, rechargeable Li-Ion Battery
- LCD on control panel with backlight
- Warning sounds combined with vibration alert
- 1/1/1/1 Class, High-Quality True Color LCD filter
- True Color technology with excellent optical properties and close-to-real color fidelity
- TH2 P R SL filter class
- Comfortable weight distribution, conventional belt combined with shoulder loop



8PNTHRFLWDG51

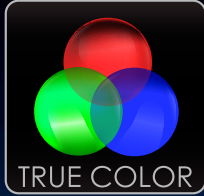


Automatic LCD Welding Helmet with powered Air-purifying Respirator System with adjustable 3 level air-flow control. The TH2 and TH3 class system provides the latest personal protection technology in the industry protect the welder from dangerous gases, dust and smoke that are present during welding and grinding. Beside the high level protection the comfortable unit increases productivity also thanks to it's very large digitally controlled **PANTHER** LCD filter.

AUTOMATIC LCD WELDING HELMETS

# PANTHER™ DIGITAL 5.1

8PNTHRDG51



4/5-9/9-13 CSS 1/1/1/1/EN379



## PANTHER™

SHADE



SENS.

DELAY

Model: XA-5122D

**iWELD®**



SHADE 4/5-13

1

2

3

MEMORY

4/5-9/9-13 CSS1/1/1/1/379  
ANSI CSS Z87 W4/5-13  
CSA CSS Z94.3 W4/5-13

PANTHER™  
DIGITAL 5.1

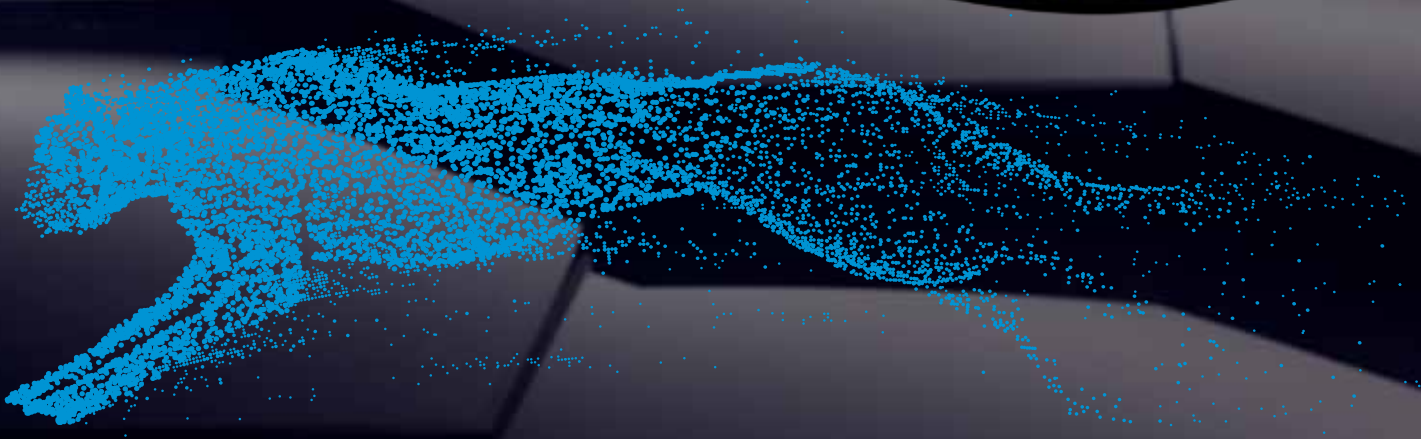


# PANTHER™ 4.6

8PNTHR46



4/5-9/9-13 CSS 1/1/1/1/EN379



# FLIP-UP DIGITAL 5.2



8FLPUPDIG52



4/5-8/9-13 YXE 1/1/1/1/379	MODEL:YXE-959D PLUS	MEMORY	CE	
ANSI YXE Z87 W4/5-13	<b>SENSITIVITY</b>	<b>1</b>	<b>SHADE</b>	
CSA YXE Z94.3	<b>DELAY</b>	<b>2</b>	<b>WELD</b>	
AS/NZS 1338.1	<b>DELAY</b>	<b>3</b>	<b>GRIND</b>	
DIGITAL CONTROL	<b>DELAY</b>			
<b>iWELD</b>	▶ SENS ▶ DELAY 0.1s 10 ▶ WELD SHADE ▲			



# ROBOTIC DIGITAL 5.2



8ROBDIG52



# AUTOMATIC LCD WELDING HELMETS

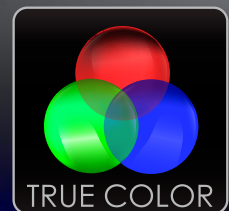
8FALCN55TCRED



8FALCN55TCTITN



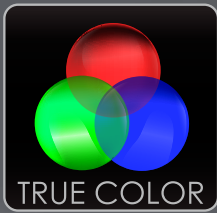
8FALCN55TCBLUE



FALCON™  
TRUE COLOR 5.5

# AUTOMATIC LCD WELDING HELMETS

## FANTOM TRUE COLOR 4.6



Silver-Metal  
8FNTM4SILMET



Red-Metal  
8FNTM4REDMET



Blue metal  
8FNTM4BLUMET



Bike-Girl  
8FNTM4BIKGRL



Alcatraz-Skull  
8FNTM4ALCSKL



Blue-Eagle  
8FNTM4BLUEAG



Poker-Skull  
8FNTM4MAGICB



Blue-Skull  
8FNTM4BLUEINF



## NORED EYE 3 TRUE COLOR



Red-Metal  
8NRDE2REDMET



Blue metal  
8NRDE2BLUMET



BLACKBASE  
8NRDE2BLACKB



Blue Eagle  
8NRDE2BLUEAG



Blue-Skull  
8NRDE2BLUEINF



Flower-Skull  
8NRDE2FLWSKL



Green-Skull  
8NRDE2GRNSKL



Fire-Bike  
8NRDE2FLMBIK



Silver-Metal  
8NRDE2SILMET



# AUTOMATIC LCD WELDING HELMETS



	<b>PANTHER FLEX RC</b>	<b>PANTHER DIGITAL 5.1</b>	<b>PANTHER 4.6</b>
Classification	1/1/1/1	1/1/1/1	1/1/1/1
Size of Viewing Area	100 x 60 mm (5.1")	100 x 83.4 mm (5.1")	100 x 60 mm (4.6")
Number of Infrared Sensors	4	4	4
Operation Temperature	-10 °C - +65 °C	-10 °C - +65 °C	-10 °C - +65 °C
Storage Temperature	-20 °C - +85 °C	-20 °C - +85 °C	-20 °C - +85 °C
Light Shade	DIN 4	DIN 4	DIN 4
Dark Shade	DIN 5-8 , DIN 9-13	DIN 5-8 , DIN 9-13	DIN 5-8 , DIN 9-13
True Color	✓	✓	✓
Grinding Mode	✓	✓	✓
Grinding Warning Flash	✓	✓	✓
Low Battery Warning Indicator	✓	✓	✓
Memory	✓ (3)	✓ (3)	✗
Deep Sleep Mode	✓	✓	✓
Switching Time	0.08 ms.	0.08 ms.	0.08 ms.
Delay Time	0.1 -0.9 sec.	0.1 -0.9 sec.	0.1 -0.9 sec.
Power Supply	Solar cell.+Li-ion (CR2450)	Solar cell.+Li-ion (CR2450)	Solar cell.+Li-ion (CR2450)
Power On/Off	Automatic	Automatic	Automatic
UV/IR Transmittance	DIN 15	DIN 15	DIN 15
Standard Compliance	4/5-8/9-13 1/1/1/1/379	4/5-8/9-13 1/1/1/1/379	4/5-8/9-13 1/1/1/1/379
Shell Material	Reinforced polyamide	Reinforced polyamide	Reinforced polyamide
Total Weight	950 gr	585 gr	565 gr

# AUTOMATIC LCD WELDING HELMETS



FLIP-UP DIGITAL 5.2	ROBOTIC DIGITAL 5.2	FALCON 5.5	FANTOM 4.6	NORED EYE 3
1/1/1/1	1/1/1/1	1/1/1/1	1/1/1/2	1/1/1/2
98 x 87 mm	98 x 87 mm	100 x 100 mm	100 x 60 mm	96 x 39 mm
4	4	4	4	2
-10 °C - +60 °C	-10 °C - +60 °C	-5 °C - +55 °C	-10 °C - +60 °C	-10 °C - +60 °C
-20 °C - +70 °C	-20 °C - +70 °C	-20 °C - +70 °C	-20 °C - +70 °C	-20 °C - +70 °C
DIN 4	DIN 4	DIN 4	DIN 4	DIN 4
DIN 5-8 , DIN 9-13	DIN 5-8 , DIN 9-13	DIN 5-8 , DIN 9-13	DIN 5-8 , DIN 9-13	DIN 9-13
✓	✓	✓	✓	✓
✓	✓	✓	✓	✓
✓	✓	✗	✗	✗
✗	✗	✗	✗	✓
✓ (3)	✓ (3)	✗	✗	✗
✓	✓	✗	✗	✗
0.1 ms	0.1 ms	0.1 ms	0.1 ms	0.1 ms
0.1 -1.0 sec	0.1 -1.0 sec	0.1 -1.0 sec	0.1 -1.0 sec	0.1 -1.0 sec
Solar cell.+Li-ion (CR2450)	Solar cell.+Li-ion (CR2450)	Solar cell.+Li-ion (CR2450)	Solar cell.+Li-ion (CR2450)	Solar cell.+Li-ion (CR2032)
Automatic	Automatic	Automatic	Automatic	Automatic
DIN 16	DIN 16	DIN 16	DIN 16	DIN 16
4/5-8/9-13 YXE 1/1/1/1/379	4/5-8/9-13 YXE 1/1/1/1/379	4/5-8/9-13 YXE 1/1/1/1/379	4/5-8/9-13 YXE 1/1/1/2/379	4/9-13 YXE 1/1/1/2/379
Reinforced polyamide	Reinforced polyamide	Reinforced polyamide	Reinforced polyamide	Reinforced polyamide
806 gr	573 gr	595 gr	540 gr	507 gr

# WELDING HAND SHIELDS, HELMETS AND GOGGLES

PVC WELDING HELMET



PVC WELDING HAND SHIELD



FIBERGLASS WELDING HELMET



FIBERGLASS WELDING HAND SHIELD



NYLON WELDING GOGGLES DIN 5A "TIP-UP"



METAL FRAME WELDING GOGGLES DIN 5A



NYLON WELDING GOGGLES DIN 5A



FULL VIEW GOGGLES WITH DIRECT VENTILATION



## PROTECTION GLASS SELECTION GUIDE

	Electrode diameter (mm)	Current (A)	Minimal protection (DIN)	Recommended protection (DIN)
MMA	≤ 3/32 (2.5)	≤ 60	7	—
	3/32–5/32 (2.5–4)	60–160	8	10
	5/32–1/4 (4–6.4)	160–250	10	12
	≥ 1/4 (6.4)	250–550	11	14
MIG/MAG		≤ 60	7	—
		60–160	10	11
		160–250	10	12
TIG		250–550	10	14
		≤ 50	8	10
		50–150	8	12
ARC GOUGING		150–500	10	14
		≤ 500	10	12
		500–1000	11	14
PLASMA WELDING		≤ 20	6	6 to 8
		20–100	8	10
		100–400	10	12
		400–800	11	14
PLASMA CUTTING		≤ 20	4	4
		20–40	5	5
		40–60	6	6
		60–80	8	8
		80–300	8	9
		300–400	9	12
	400–800	10	14	

# PROTECTION CLOTHES

## APRON, COW SLIT LEATHER

KEVLAR sewed, spark and flame resistant golden yellow cow split welding apron. 100°C (60 sec) resistant against contact heat.

CE



50APRK811Y EN470-1,  
EN11611:2008 Class1

## WELDING BOLERO, COW SPLIT LEATHER

KEVLAR sewed, spark and flame resistant golden yellow cow split welding bolero. 100°C (60 sec) resistant against contact heat.

CE



50HDBOLERO EN470-1,  
EN11611:2008 Class1

## WELDING GOWN, COW SPLIT LEATHER

KEVLAR sewed, spark and flame resistant golden yellow cow split welding gown. 100°C (60 sec) resistant against contact heat.

CE



**XL:** 50WEGOWNYKXL EN470-1,  
**XXL:** 50WEGOWNYKXXL EN11611:2008 Class1

## SLEEVE, COW SPLIT LEATHER

KEVLAR sewed, spark and flame resistant golden yellow cow split welding sleeves. 100°C (60 sec) resistant against contact heat.

CE



50SLEVKY EN470-1,  
EN11611:2008 Class1

## WELDING JACKET

KEVLAR sewed, spark and flame resistant golden yellow cow split welding jacket. 100°C (60 sec) resistant against contact heat.

CE



**XL:** 50JCTKXL EN470-1,  
**XXL:** 50JCTKXXL EN11611:2008 Class1  
**XXXL:** 50JCTKXXXL

## SPATS, COW SPLIT LEATHER

KEVLAR sewed, spark and flame resistant golden yellow cow split welding spats with velcro. 100°C (60 sec) resistant against contact heat.

CE



50SPATK14YN EN470-1,  
EN11611:2008 Class1

# PROTECTION GLOVES

## WELDING GLOVES - KEVLAR

Spark and flame resistant cow split full padded welding gloves. 100°C (15sec) resistant against contact heat. **KEVLAR** sewed.

50WEGK1410YL



EN420,  
EN388: 3143,  
EN407:413X3X,  
EN12477: type A



Size: **10:** 50WEGK1410YL      **50WEGK1410BL**

## WELDING GLOVES - ERGORED

Fine goatskin palm, split cowhide back and cuff AWI/TIG premium welding gloves. 100°C (12sec) resistant against contact heat. **KEVLAR** sewed.

50WEGK1410RL



EN388:3111,  
EN407:413X4X,  
EN12477 type A



Size: **10:** 50TIGK1310YN      **11:** 50TIGK1311YN

## WELDING GLOVES - BASIC

Spark and flame resistant cow split full padded welding gloves. 100°C (15sec) resistant against contact heat.

50WEGBSC1410N



EN420,  
EN388: 3143,  
EN407:413X3X,  
EN12477: type A



Size **10:** 50WOG1010BNDP

## TIG WELDING GLOVES

Fine goatskin palm, split cowhide back and cuff AWI/TIG premium welding gloves. 100°C (12sec) resistant against contact heat. **KEVLAR** sewed.

50TIGK1310YN  
50TIGK1311YN



EN420,  
EN388:2111,  
EN407:412X4X,  
EN12477 type B



Size: **10:** 50TIGK1310YN      **11:** 50TIGK1311YN

## TIG WELDING GLOVES

Fine goatskin palm, split cowhide back and cuff AWI/TIG premium welding gloves. 100°C (12sec) resistant against contact heat. **KEVLAR** sewed.

50TIGK1011YN



EN420,  
EN388:1111,  
EN407:212X2X,  
EN12477 type B



Size: **10:** 50TIGK1010YN      **11:** 50TIGK1011YN

## TIG WELDING GLOVES

Fine goatskin AWI/TIG premium welding gloves. 100°C (12sec) resistant against contact heat.

50TIG1010N  
50TIG1011N



EN420,  
EN388:1111,  
EN407:212X2X,  
EN12477 type B



Size: **10:** 50TIG1010N      **11:** 50TIG1011N

# WELDING WORKWEAR - WELDINGPRO

The **WELDINGPRO** Workwear is suitable for grinding, cutting and welding work on Welding workstations due to antistatic, heat and flame retardant materials and aramid sewing.

This type of protective clothing is intended to protect the wearer against spatter (small splashes of molten metal), short contact time with flame, radiant heat from an electric arc used for welding and allied processes, and minimizes the possibility of electrical shock by short-term, accidental contact with live electrical conductors at voltages up to approximately 100 V d. c. in normal conditions of welding. Sweat, soiling, or other contaminants can affect the level of protection provided against short-term accidental contact with live electric conductors at these voltages.



## WELDING JACKET

- 99% cotton, 1% anti-static thread
- sewing with heat resistance aramid thread
- 2 chest pockets with flap and hidden fastening
- comfortable waist combined with rubber on both sides
- concealed long zipper under flap
- cuffs fixed by buttons
- decorative borders



## BRACE OVERALL

- 99% cotton, 1% antistatic thread
- sewing with heat resistance aramid thread
- 2 front pocket
- comfortable waist combined with rubber on rear side
- chest pocket with flap, closed with hidden velcro
- adjustable knee pockets
- adjustable braces, combined with rubber
- slot fixed by button
- decorative borders



EN ISO  
11612



EN ISO  
11611



EN 1149

# WORKWEAR - METALWORK

**METALWORK** Workwear is made by 100% cotton, general purpose protective clothing. It is particularly resistant to stresses in metalworking and machining plants

## WORK JACKET

- 100% cotton
- 2 chest pockets with flap
- 2 front pockets with snap fasteners
- comfortable waist combined with rubber on both sides
- concealed long zipper under flap
- cuffs by snap fasteners
- decorative borders



# METALWORK

## BRACE OVERALL

- 100% cotton
- 2 front pockets
- comfortable waist combined with rubber on rear side
- 2 chest pocket
- leg pocket with flap and hidden fastening
- ruler pocket
- heightened knee pad
- adjustable braces, combined with rubber
- slot fixed by zipper
- decorative borders



## WORK TROUSERS

- 100% cotton
- 2 front pockets
- comfortable waist combined with rubber on rear side
- 2 back pocket with flap
- leg pocket with flap and hidden fastening
- ruler pocket
- heightened knee pad
- slot fixed by zipper
- decorative borders

