

PLASTIC REPAIR

PLASTIC WELDER



This product is repair reinforcement of car bumper & motorcycle plastic shell and most of plastic article etc.

Set the temperature control knob according to the type of plastic (19272)

Thin plastic (bumper etc.)

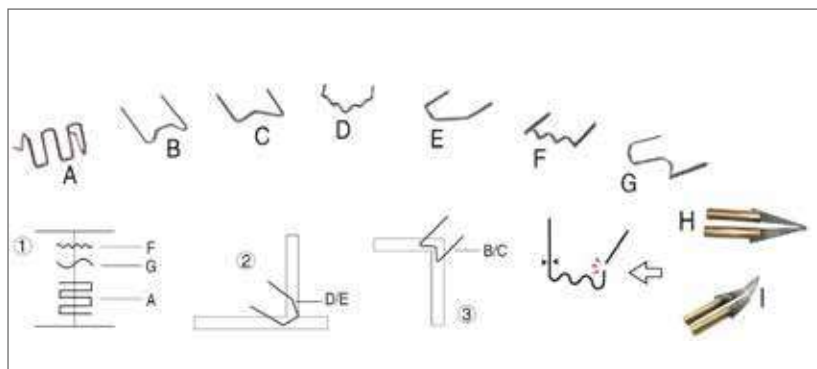
2 - To about 5mm thick plastic

3 - Thick or hard plastic Melting and smooth the plastic surface

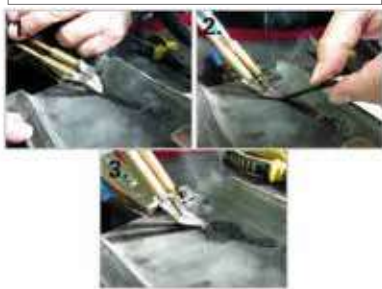
4 - Melting and smooth the plastic surface. Cutting plastic tape or Styrofoam

	19272	19273
Rated Input Voltage	230V AC±15%, 50/60Hz	
Adjustment steps	4	1
Stapling		✓
Welding		✓
Welding mode	fast heating/cooling	
Output Current Range	65A	7A-45A
Weight	4 kg	0,76 kg
Dimensions	220 x 130 x 120 mm	239 x 49 x 61 mm
Art. Nr.	800CARRPWELD	800HANDPLWELD

HANDY PLASTIC WELDER



Plastic welding



Stapling



Ironing surface



Heating Cut



Repairing big hole



Lead-Tin Soldering

